

Selfie Stick Instructions:



For Apple Devices: Plug the cord into the auxiliary jack of your Apple device. Open up the camera app and push the button on the selfie stick to take photos.

For Android Devices: Plug the cord into the auxiliary jack of your Android device. You will either need to simply change your settings on your device or download a free app to be able to use the selfie stick.

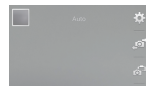
Android Settings Change Instructions:

If when plugging the cord into the auxiliary jack you find that the button on the handle works as a zoom function, you will need to go into your camera settings and make a simple change. To alter your camera settings, open up the camera app. Click on the gear/settings icon and look through the settings menu for an option that references a trigger or volume key. If your Android device has the setting mentioned above, you will need to change the function of the "volume key" to "camera key." Once this has been altered, you should have no problem using the button on the Selfie Stick as a Camera Shutter button.

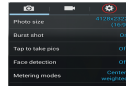
If your Android device does not have this setting option, download the free App called "Camera360." This app enables the volume button-as-trigger function so you will be able to use the Selfie Stick's button as a Camera Shutter.

Android ct.

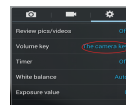
① Open the camera, click on the Gear-shaped icon. Continue to click on the icon in the top right corner of the gear to get into the next layer.



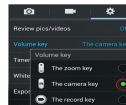
② Continue to click on the icon on the right side of the gear-shaped layer to the next settings menu.



③ Click on "volume key zoom key" to enter the next layer in the options menu.



④ In this menu, choose "camera button" as pictured.



⑤ Exit the Settings window and return to camera mode and your remote button on the handle will now work as a camera shutter button.

Using operation



Parts come unconnected



Insert mobile phone into the phone clamp by lifting the spring loaded side clamp



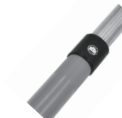
The clamp is then affixed to the extension arm screw. Ensure that your device is securely inserted into the selfie stick to prevent damage by dropping the device.



Connect your smartphone by inserting the 3.5mm earmud , then open the camera



Extend the telescopic arm via the extension arm to desired distance



Press the button on the arm handle